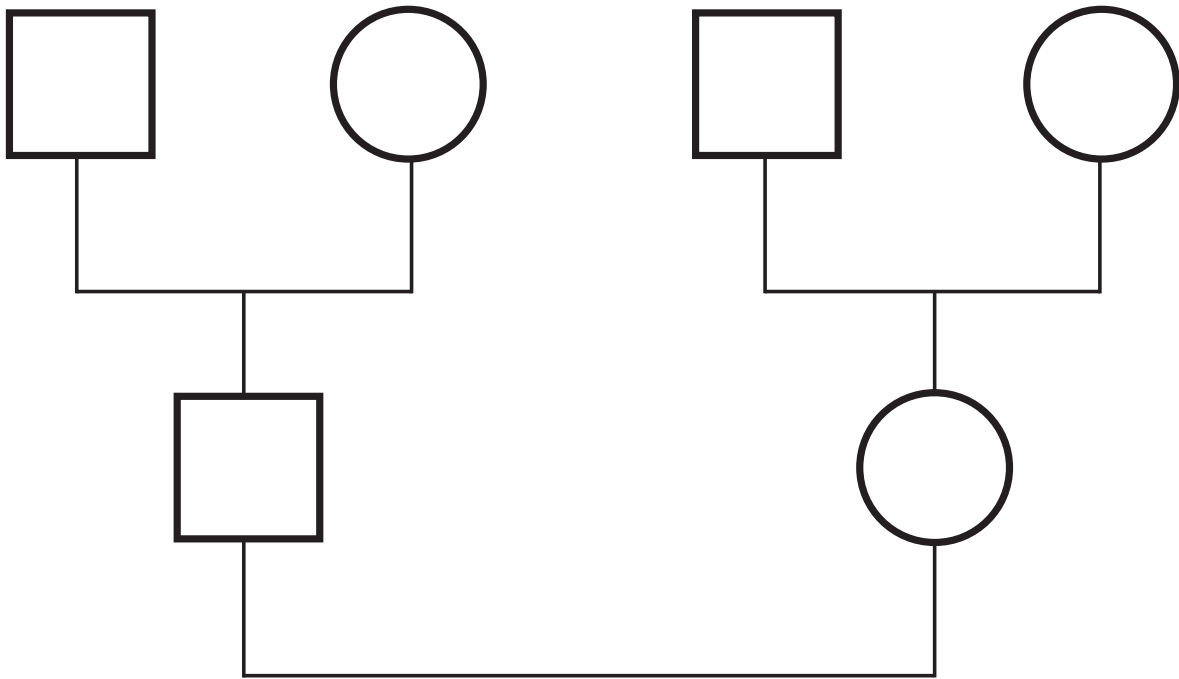


# COUNSELING ASSESSMENT (*Genogram*)



FEMALE	○	MARRIAGE	┌──────────┐	CONFLICT	~~~~~
MALE	□	SEPARATION	┌───/───┐	CLOSE	▬▬▬
DEATH	◓◑	DIVORCE	┌───//───┐	ENMESHED	▬▬▬▬▬
		ESTRANGED	┌───┐ ┌───┐	DISTANT	- - - - -

After you have completed your genogram, respond to the following questions:

1. During your childhood, who met your need for **ATTENTION**? Who left their world, entered into yours, and did things with you that you liked to do?
2. During your childhood, who met your need for **AFFECTION**? Who communicated care and closeness through physical touch and verbalized love?
3. During your childhood, who met your need for **COMFORT**? Who expressed feelings of hurt and sadness when you hurt, instead of just giving advice or pep talks?
4. During your childhood, who met your need for **APPROVAL**? Who affirmed you and expressed appreciation for who you were as a person (not just for what you did)?